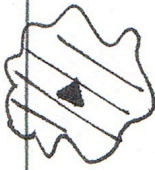


Briggs Hall Pollinator Garden

Plant name, plant family, exposure	Flowering period and flower color												Bee resource
	Jan	Feb	Mar	Apr	May	Jun	Jul	Aug	Sep	Oct	Nov	Dec	
Rosemary <i>Rosmarinus officinalis</i> Lamiaceae SUN													Nectar
Evergreen currant <i>Ribes viburnifolium</i> Grossulariaceae SHADE													Nectar and pollen
Ceanothus 'Valley Violet' <i>Ceanothus maritimus</i> 'Valley Violet' Rhamnaceae SUN													Nectar and pollen
Brandegee's sage 'Pacific Blue' <i>Salvia brandegeei</i> 'Pacific Blue' Lamiaceae SUN													Nectar
Seaside daisy 'WR' <i>Erigeron hybrid</i> 'WR' Asteraceae SUN													Nectar and pollen
Cleveland sage 'Allen Chickering' <i>Salvia clevelandii</i> 'Allen Chickering' Lamiaceae SUN													Nectar
Snowberry, Sonoma County form <i>Symphoricarpos albus laevigatus</i> Sonoma County form Caprifoliaceae SHADE													Nectar
California buckwheat <i>Eriogonum fasciculatum</i> Polygonaceae SUN													Nectar
Gum plant <i>Grindelia camporum</i> Asteraceae SUN													Nectar and pollen
California fuschia 'Brilliant Smith' <i>Epilobium canum</i> 'Brilliant Smith' Onagraceae SU/SH													Nectar
California goldenrod 'Cascade Creek' <i>Solidago californica</i> 'Cascade Creek' Asteraceae SUN													Nectar and pollen

CAC 9/23/15

= existing
Lagerstroemia
indica



• = Epilobium canum
'Brilliant Smith'

Ef = Eriogonum fasciculatum

Grin = Grindelia camporum

R = Rosmarinus officinalis
CV TBD

Rib. vib. = Ribes viburnifolium

Sb = Salvia brandegei
'Pacific Blue'

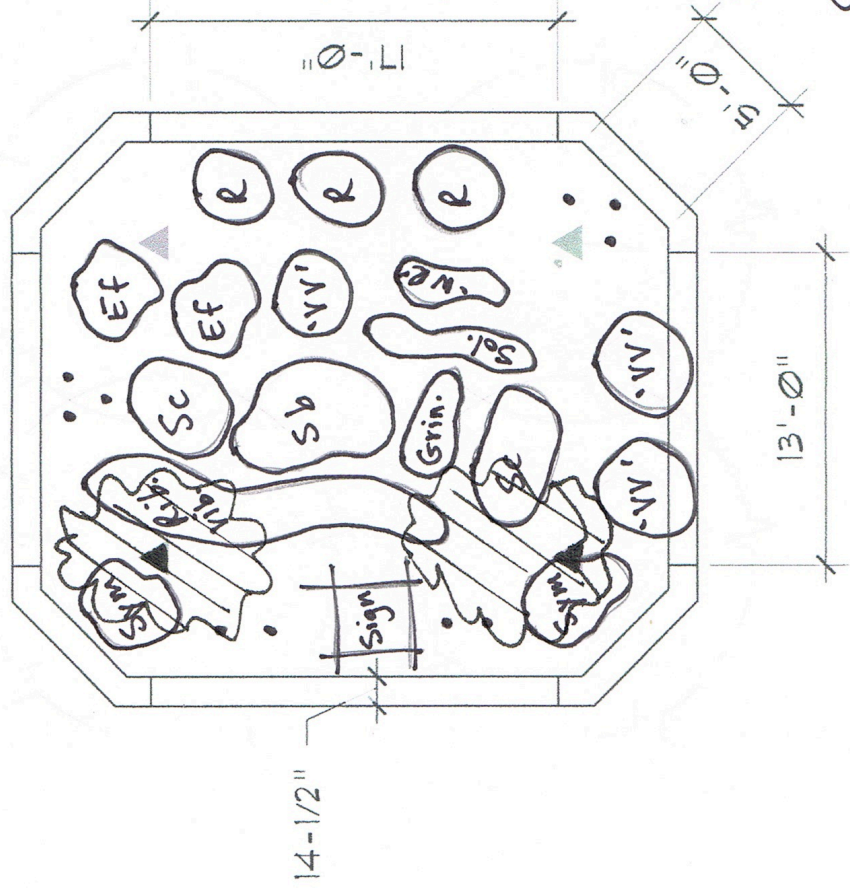
Sc = Salvia clevelandii
'Allen Chickering'

Sol = Solidago californica
'Cascade Creek'

Sym = Symphoricarpos alba laevigatus
(Sonoma County form)

VV = Ceanothus maritimus
'Valley Violet'

WR = Erigeron 'WR'



3
3
14

Date:	9/1/15
Drawing #:	
Drawn by:	DDL
Reviewed by:	SCM
Revision #:	
Revision date:	
Revised by:	
Reviewed by:	